

GARDEN DESIGN SERVICE



DESIGN



AWARD
WINNER
2023

- ATTENTION TO DETAIL ■
- OVER 25 YEARS OF EXCELLENCE ■
- INNOVATIVE DESIGN RESOLUTIONS ■

AWARD WINNING DESIGNS

Gardens should bring joy and be beautifully crafted. PWP Design & PWP Landscape create award winning gardens that capture the imagination.

NATIONAL LANDSCAPE AWARDS



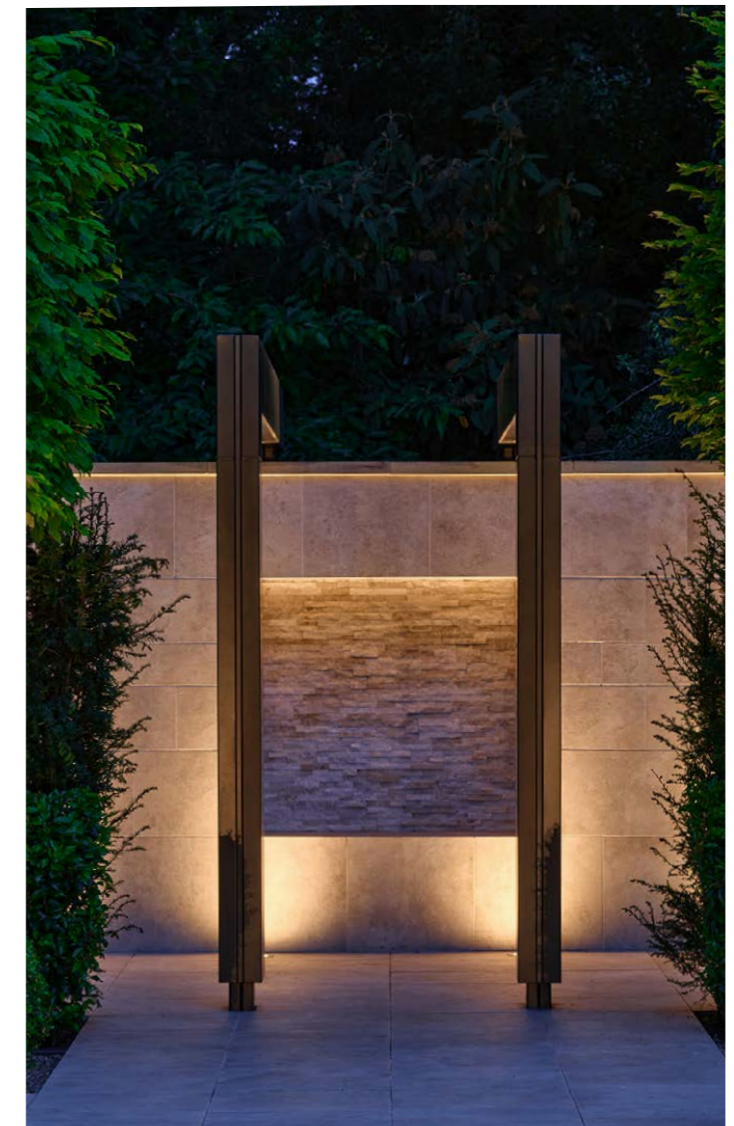
“The garden of this impressive new-build property has been designed with a strong axis and layout, providing amazing views from the house and taking full advantage of the countryside views beyond. The front garden and driveway set the tone but it is the rear garden that thrills. Its terrace with steps down to an extensive formal lawn bordered by hedging and boxed hornbeams, sunken patio with sculpture, pergola and secret garden all combine to deliver understated grandeur.”

BALI Award Adjudicators 2020



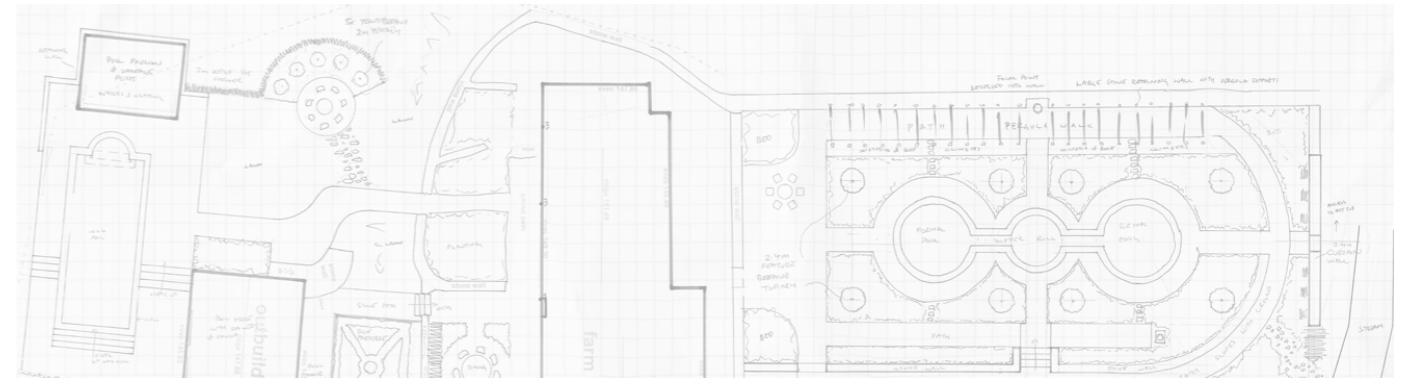
Fulwood House Garden Yorkshire

BALI Principal Award Winner 2020
BALI Special Award For Design & Build 2020
BALI Grand Award Winner 2020





Adrian Parr
Company Director at PWP Landscape



PWP Landscape directors, Adrian and Ian have been designing and installing beautiful, innovative outdoor spaces for over 25 years. Their wealth of knowledge and understanding underpins their approach to design and they are passionate about creating exciting landscapes for both domestic and commercial projects.



Ian Woolford
Company Director at PWP Landscape

Simon joined the team in 2015 to head up PWP Design, providing a full spectrum of landscape architectural design services including strategy documentation, design guides, concept sketches, planning information, detailed CAD-based drawings, build specifications and overseeing implementation of a wide range of commercial and private schemes on-site. Beatrice is the garden design manager for PWP Design, this includes overseeing projects and our team.



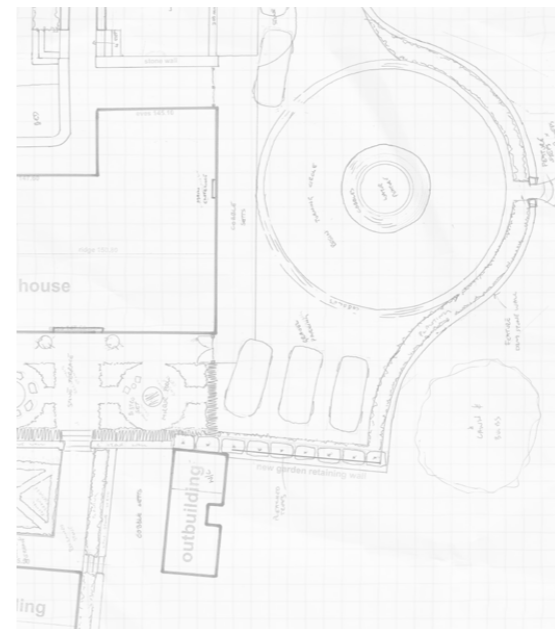
Simon Hall
Company Director at PWP Design



PWP Landscape www.pwplandscape.co.uk install award winning gardens in the North Leeds, Harrogate and York area and can quote on your garden design. When we design gardens further afield we can help suggest local landscape contractors if needed.

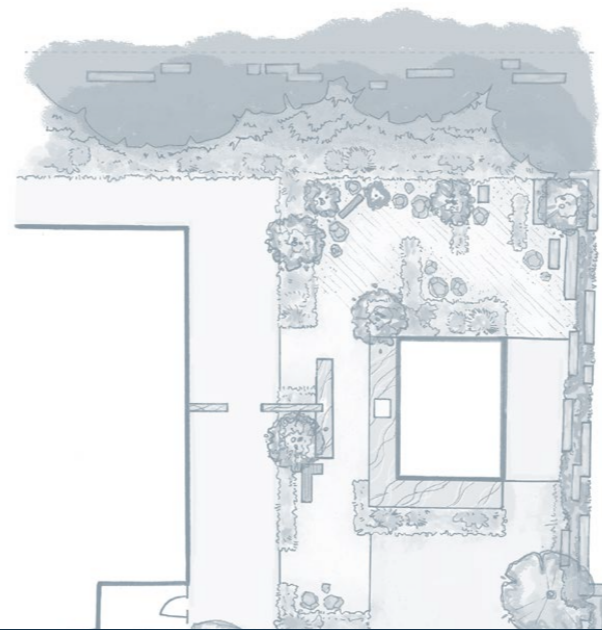
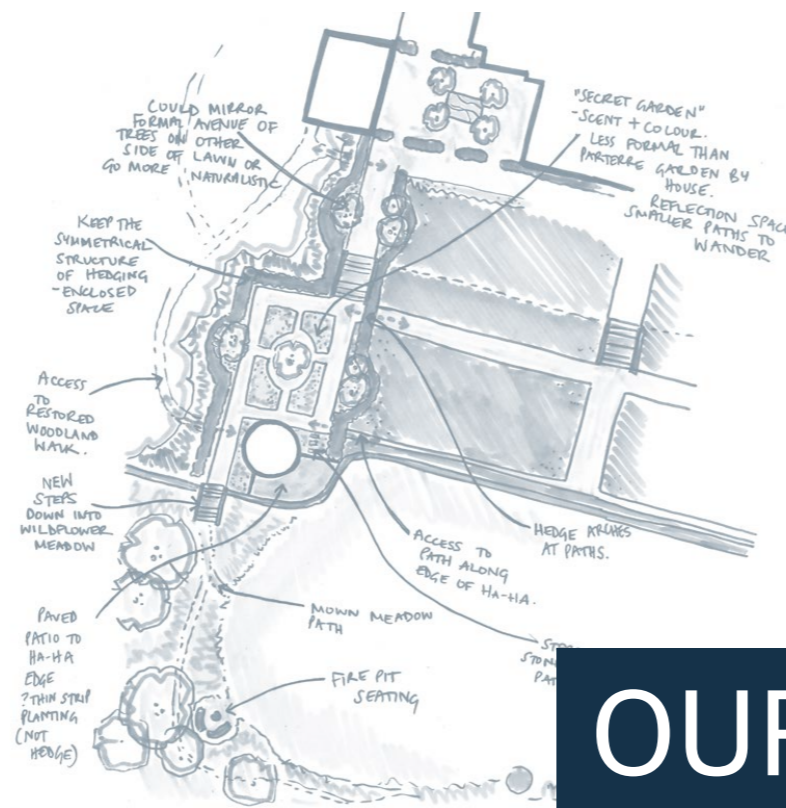


Beatrice Freeman
Garden Design Manager at PWP Design



PWP has completed a wide range of garden design projects achieving a reputation for attention to detail and innovative design resolution, with 90% of new work being recommendations.

MEET THE TALENTED TEAM



We pride ourselves on fantastic customer service and an approachable friendly team.

We are creative designers and sketch throughout the design process to help realise your brief.

We understand how to construct gardens and we bring this attention to detail to our designs.

OUR APPROACH TO DESIGN

GARDEN CONCEPT DESIGN PACKAGE

The concept design is the first step in the creative process. Here is our typical package, however we look at each project individually to work out the best approach for your requirements.



[Click on portfolio images to see more!](#)

Step 1. Design Consultation: We will meet you to see the site and discuss your needs, ideas and project requirements. This allows us to understand your design brief. This is the most important part of the process for us and essential for us to get to know your likes, dislikes and how you would like to use your garden.

Step 2. Site Survey: Within the typical design package we will visit site and measure up or buy a basic OS plan. This allows us to produce a simple survey drawing for use to create the designs. On more complex or large sites we may recommend that you commission a formal topographical survey to give us more detailed information. We frequently work with local survey companies and will coordinate quotes for you if required.

Step 3. Garden Design Options: We will prepare two garden design options to illustrate alternative ideas, layouts, styles and materials. Our typical design package includes the preparation of rendered plan view sketches, with mood board images to help illustrate ideas. We can also produce 3d visuals and animations during or at the end of the concept design process as an optional extra.

Step 4. Consultation & Final Garden Design Sketch: Once you have had time to think about the initial garden design options, we will get in touch to discuss. We are then able to finalise your preferred option or create a blended option. This final garden design sketch provides you with a masterplan for your garden. Detailed decisions on colours, materials and features will continue with your contractor or through detailed design.



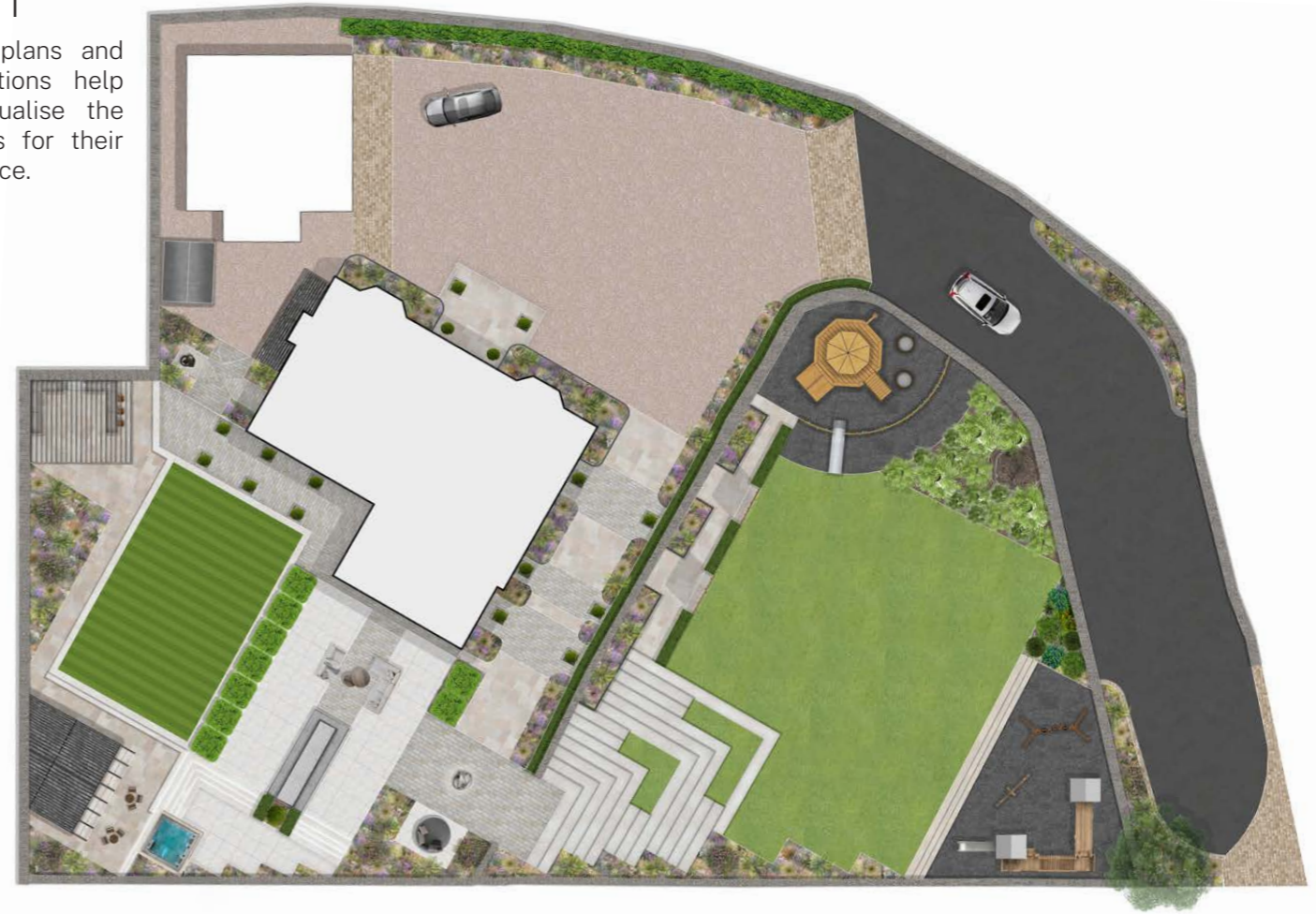
EXAMPLE: CONCEPT DESIGN SHEET



EXAMPLE: 2 CONCEPT DESIGNS

OPTION 1

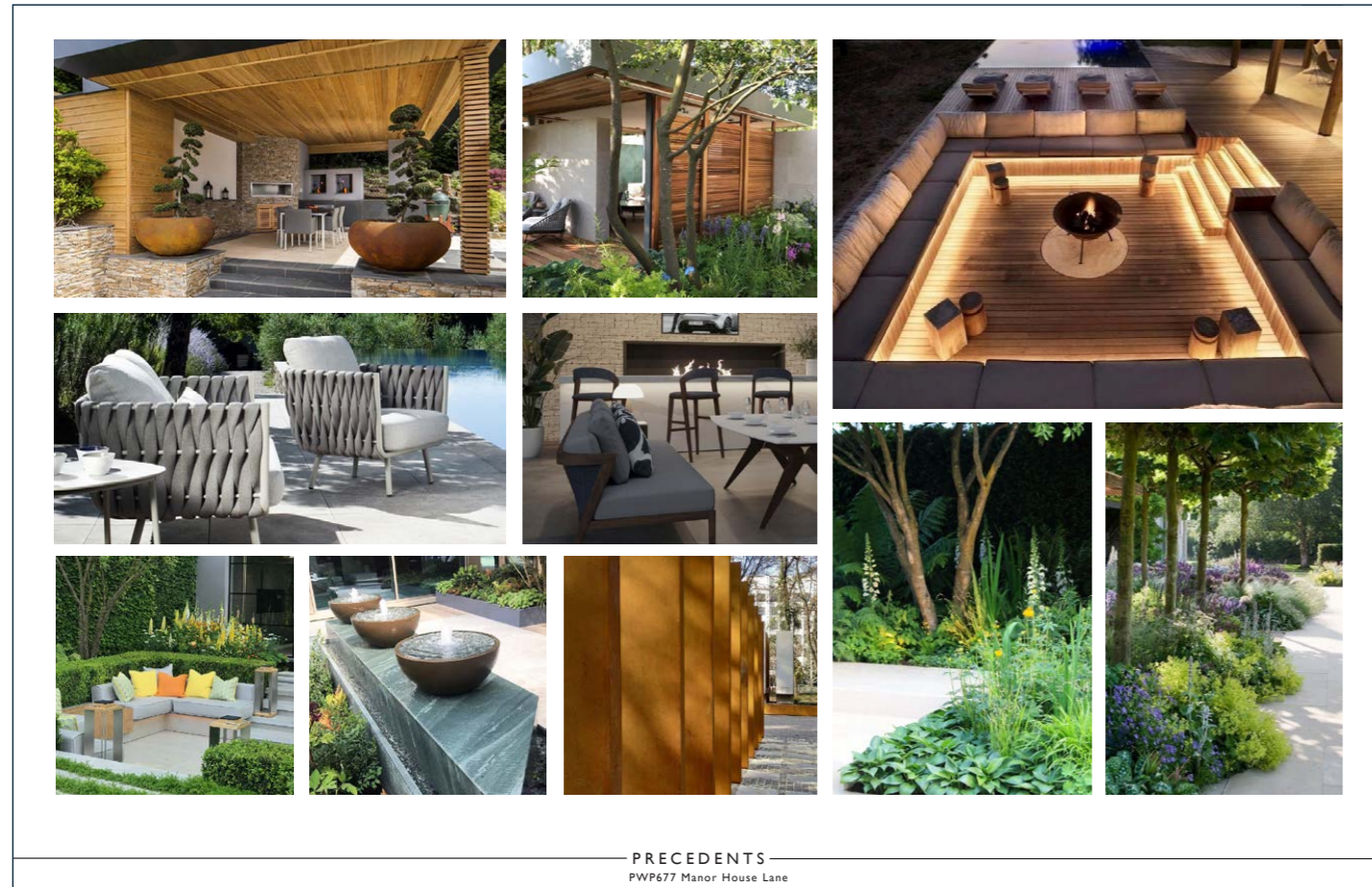
Rendered plans and sketch options help clients visualise the possibilities for their garden space.



OPTION 2



EXAMPLE: MOOD BOARD



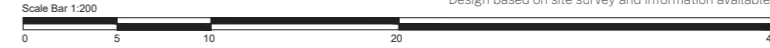
FINAL CONCEPT DESIGN - MASTERPLAN

PWP123 Rawdon Garden

NOTE: Concept Design Only
 · Not for construction-all dimensions and finished levels to be confirmed and determined on site
 · Design based on site survey and information available



Scale: 1:200 @ A1
 Revision: 00
 Drawn: BF
 Date: 13.12.23



Key

1. Main entrance to both properties to be retained as existing.
2. Proposed private entrance with gate posts and 'Daisy Hill' signage to tie into the existing walls. Area to restrict pulling in from the neighbour's driveway.
3. Driveway to be widened and levelled out where possible to create an attractive route towards the house with passing space for cars. Existing wall to be retained if possible.
4. Stone edging and feature lighting to create interest along the driveway.
5. Proposed evergreen hedge planting along the drive to create a consistent green edge and create screening from the lower track.
6. Feature stone setts to create parking area tucked behind the garage.
7. Tiered planting beds with ornamental planting and feature lighting to frame the drive and upper lawn. Walls to tie into the existing stonework.
8. Circular lawn at upper level with stone edge. To be framed by ornamental planting for seasonal interest and hedge planting along the wall to create privacy from the neighbouring property.
9. Sculpture with feature lighting to create a focal point to be viewed from the kitchen.
10. Louvred pergola and bar area tucked into the existing wall to create a shaded entertaining area.
11. Existing terrace above the garage to be retained with lounge and dining area.
12. Timber bin store located at the bottom of the access steps.
13. Driveway area below the Yew tree to be improved with re-levelling of the driveway and resurfacing in tarmac with stone edge. Shade loving planting and up-lighters to the tree to create seasonal and evening interest. Low raised planter to frame the existing walls and create a neat edge.
14. Proposed stone sett paving to create a generous parking area, to open up views up to the front of the house and create a grander entrance.
15. Existing rockery to be extended to help retain the parking area.
16. Connecting path framed by evergreen hedges and mixed fern planting.
17. Proposed slab rock steps up to intermediate and upper lawn levels.
18. Existing rockery to be extended to create retaining edge to the upper lawns and parking area with shade loving planting below the tree canopy to create a naturalistic, low maintenance area.
19. Formal circular lawn at the upper level (to tie in with the existing patio). Retained by low retaining wall in corten steel. Alternatively, a sloped bank could connect to the lower lawns.
20. Proposed seating area by the circular lawn framed by ornamental planting beds with long views out across the garden. Area to be framed by retaining walls with feature lighting for a dramatic evening scene.
21. Retaining wall height to slope with the land as it meets existing levels.
22. Low retaining wall approximately 450mm height with built in timber bench that over looks the garden.
23. Proposed steps to link the patio areas to the upper rockery behind the house.
24. Retaining walls at upper level to retain planting bed with low maintenance planting.
25. Informal seating area at upper level with timber bench to take in views from the highest point of the garden.
26. Existing rockery garden at upper level to be enhanced with ornamental planting.
27. Existing patio to be enhanced with outdoor projector onto white rendered wall, festoon lighting, lounge seating, raised planters to create an attractive courtyard area.
28. Intermediate level lawn to wrap around the garden tying into existing levels and connecting to the pavilion. (+121.600).
29. Lower level sweeping lawn to connect through to the wider garden. (+121.000)
30. Existing store room and greenhouse to be replaced with a open garden pavilion with outdoor bar and dining space to create a focal point and gathering space on the east side of the garden. Alternatively the area could have a smaller gazebo to allow the proposed lawns can sweep around the full extent of the garden to tie in with existing levels.
31. Sloped lawn area with orchard tree planting for seasonal interest.
32. Wider garden areas and woodland to be maintained and enhanced with bulb and woodland style planting where required. Management of garden to keep borders clear of brambles and other unwanted plants.

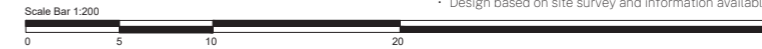
FINAL CONCEPT DESIGN - MATERIALS PLAN

PWP123 Rawdon Garden

NOTE: Concept Design Only
 • Not for construction-all dimensions and finished levels to be confirmed and determined on site
 • Design based on site survey and information available

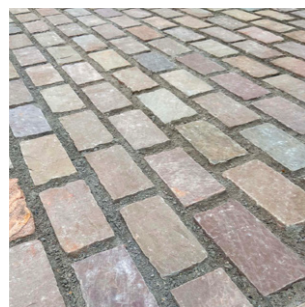


Scale: 1:200 @ A1
 Revision: 00
 Drawn: BF
 Date: 13.12.23



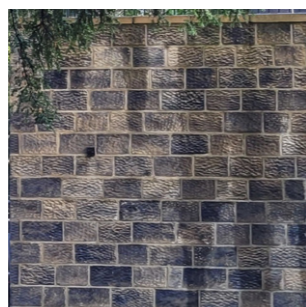
1. Driveway

Main Surface - Tarmac (Approx area 550m²)
Edges & Feature Bands - Riven Stone Setts in Raj Green by London Stone
Parking Areas - Riven Stone Setts in Raj Green by London Stone



2. Front Garden - Retaining Walls

Driveway - Walls to the driveway to be retained if possible (Approx length 27m)
Proposed Beds & Lawn - Reclaimed stone coursed walling to match the garage (Approx length 50m)
Coping - Sawn sandstone coping from local quarry



3. Upper Lawn

Edges - Platinum Grey Porcelain Setts by London Stone, 200x100mm (Approx Circumference 23m)



4. Parking Court

Main Surface - Riven Stone Setts in Raj Green by London Stone (Approx 90m²)
Trim - Sawn sandstone from local quarry (Approx 20m²)



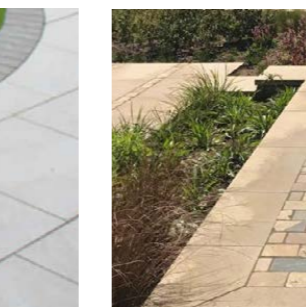
5. Path to Steps

Main Surface - Sawn stone infill from local quarry (Approx Area 25m²)
Trim - Riven Stone Setts in Raj Green by London Stone (Approx Area 5m²)



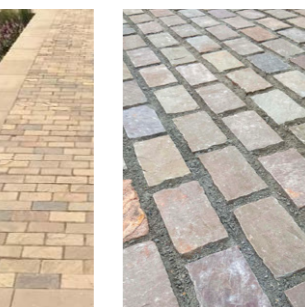
6. Upper Lawn Patio

Patio Paving - Golden Stone Porcelain Paving by London Stone 1200x600mm (Approx area 55m²)
Retaining Walls & Coping Stones - Drystone wall effect with stone from local quarry (Approx length 85m) & Sawn local stone coping, 300 x 50mm (Approx length 85m)



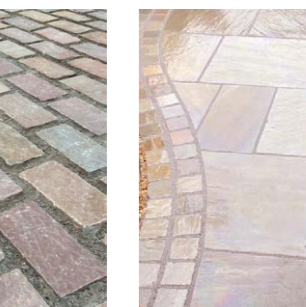
7. Rockery & Steps

Rockeries - Stone reclaimed from excavations on site and local quarry - (Approx area below tree 85m², Approx area to top corner of garden 70m², Approx extension of lower rockery 100m²)
Steps - Slab rock to tie into rockery



8. Circle Lawn

Curved Retaining Wall - Corten steel retaining edge or cladding, 400mm high (Approx arc length 36m)
Upper Path - Ornamental Gravel eg. Cotwold Buff Chippings (Approx area 20m²)
Path Edge - Corten Steel Low Edge - 3/6mm (Approx length 20m)



9. Garden Room Patio

Area in abeyance - Proposals to be confirmed
Paving - Reclaimed stone sourced on site or from local area (Approx area 110m²)
Walls & Coping - Existing stone found on site & sawn sandstone coping from local quarry



DESIGN



LANDSCAPE

Give us a call on: 0113 2563555

Drop us an email at: info@pwppdesign.co.uk

See more on our website: www.pwppdesign.co.uk
www.pwplandscape.co.uk

We are proud to have created beautiful gardens of all scales and styles for our clients over the past 25 years. Please contact us and we can discuss your project.



Find us on Instagram

